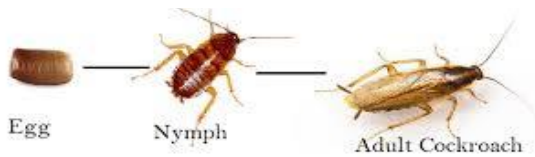


German Cockroach *Blattella germanica* (L.)



Size: German cockroach adults are about (13-16 mm) long.

Characteristics: The German cockroach smallest in size. Female abdomen is broader than that of male.

Color: Light brown to tan with two almost parallel, dark longitudinal stripes, bars, or streaks on shield; female darker than male.

Habitat: German cockroaches live in warm and humid places, such as kitchens, bathrooms, and bedrooms etc. They spend about 75% of their time hidden away in cracks and crevices. Smallest nymphs only need about a millimeter of space, while adults need about 5 mm.

Diet: All types of food, as well as things like soap, glue and toothpaste.

Biology: Female carries egg capsule until within 1-2 days of hatching, and deposits it in a sheltered place. She will produce about 5 egg capsules (30-40 eggs each) in her life. Development from egg to adult varies, averaging about 3 months, but can be faster, resulting in 3-4 or more generations per year. Adults live about 3-7 months. Reproducing females are very active, but females carrying egg capsules are not, coming out for food and water only when necessary. Males hide, even at night. The last three days before molting, developing cockroaches (nymphs) stay hidden.

Damage: German cockroaches are the most common, and have the most impact as a nuisance. They may transmit disease organisms, and cause allergic reactions in some people.

Invasion: They come inside with paper products and packaging, and used appliances. In summer they may move from one building to another. They can survive outdoors if it is warm, although this is uncommon.