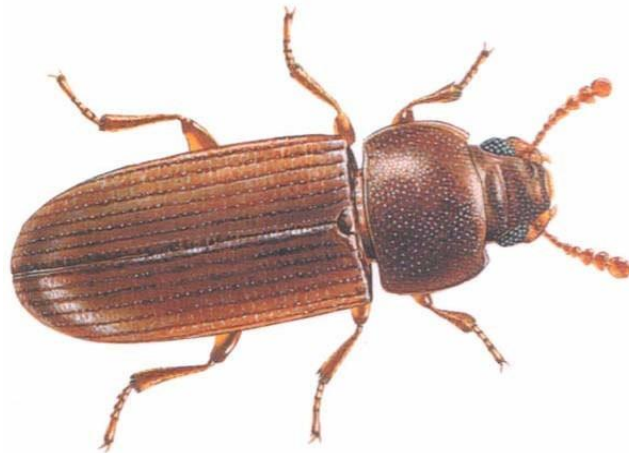


## **Red Flour Beetle *Tribolium castaneum* & Confused Flour Beetle *T. confusum***



### **Characteristics:**

Flour beetle adults are about (3-4mm) long.

Red flour beetles are short fliers while confused flour beetles don't fly.

Red Flour beetle antennae end in three segmented clubs while Confused Flour beetle antennae gradually broaden towards the tip

### **Diet**

These beetles are unable to feed on whole kernels or undamaged grain. They consume all grains and grain products, peas, beans, shelled nuts, dried fruits, spices, milk chocolate, drugs, snuff, and cayenne pepper. They are attracted to flour and high moisture content.

### **Biology**

The flour beetle female deposits 300-500 clear-white sticky eggs on or among food materials and cracks, in bags, or through the mesh of sacks containing food. The female lays 2-3 eggs per day, but lives for 2-3 years. The eggs hatch in 5-12 days into brownish-white larvae, which go through 5-18 instars (usually 7-8) and reach maturity in about 30 days under optimal conditions. The life cycle (egg to egg) can be completed in only 7 weeks, or it may require 3 months or longer. Although humans are not injured by it, red flour beetles do impart a disagreeable odor and taste to the flour they infest.